

ULC77241

Rail-to-rail Input, Open-drain Output Low-power CMOS Voltage Comparator

DESCRIPTION

UTC ULC77241 is a voltage comparator with rail-to-rail input range and open-drain output. Based on CMOS process, it features low quiescent consumption of 6 μ A and low operating voltage from 1.8V to 5.5V. It is suitable for battery powered application.

FEATURES

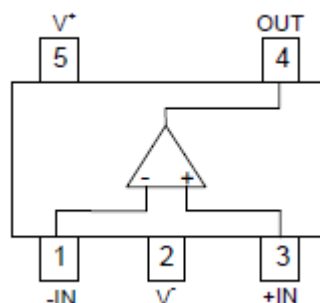
- ◆ Supply Voltage Range: 1.8V~5.5V
- ◆ Quiescent Current: 6 μ A (Typ.)
- ◆ Low Offset Voltage: 6mV (Max.)
- ◆ Rail-to-Rail Input
- ◆ Open-Drain Output
- ◆ Propagation Delay: 940ns (Typ.)



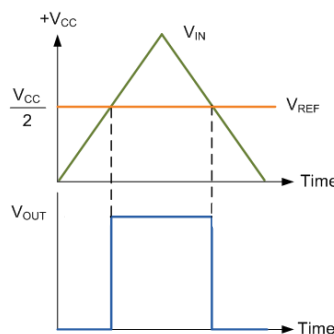
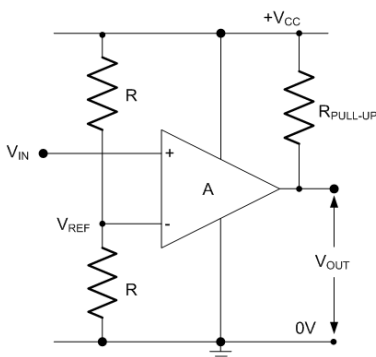
SOT-25

Applications

- ◆ Portable and battery-powered applications
- ◆ Supervisory and monitoring circuits
- ◆ Sensor applications
- ◆ Industrial instruments



Circuit example (non-inverting voltage comparator)





Analog IC / Discrete total solution provider

ULC77241

Rail-to-rail Input, Open-drain Output Low Power CMOS Comparator

Applications

Portable and Battery-Powered Application



Supervisory and Monitoring Circuit



Sensor Application



Industrial Instrument



ULV7211

Rail-to-rail Input, Push-pull Output CMOS Comparator

DESCRIPTION

UTC ULV7211 is a voltage comparator of μA -level consumption. The rail-to-rail input range makes it ideal for sensor interface. Its SOT-25 miniature package is suitable for compact portable devices.

FEATURES

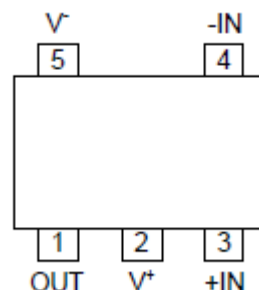
- ◆ Supply Voltage Range: 2.7V~15V
- ◆ Quiescent Current: 25 μA (Max.)
- ◆ Low Offset Voltage: 15mV (Max.)
- ◆ Rail-to-Rail Input
- ◆ Push-pull Output



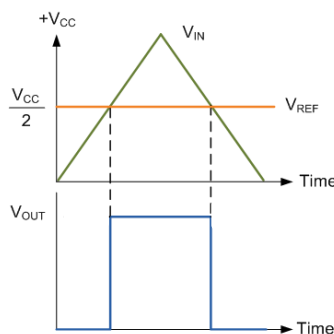
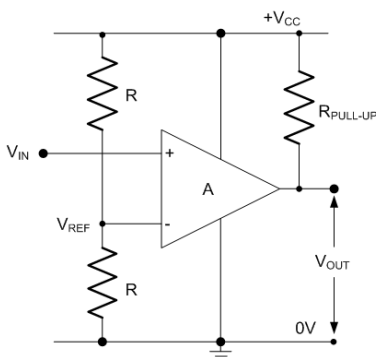
SOT-25

Applications

- ◆ Optical and magnetic sensors
- ◆ PC card (PCMCIA card)
- ◆ Mobile phones
- ◆ Laptop computers



Circuit example (non-inverting voltage comparator)





Analog IC / Discrete total solution provider

ULV7211

Rail-to-rail Input, Push-pull Output CMOS Comparator

Applications

Optical And Magnetic Sensor



PC Card (PCMCIA Card)



Mobile Phone



Laptop Computer

